

HAMBLETON VILLAGE NEWS

DECEMBER/JANUARY 2021

ISSUE 362

TOP STORIES

Parish Council News - P. 2- 3

- Path finally resurfaced
- New Vehicle Activated Signs
- CCTV Rec Field
- Remembrance Day
- Coronavirus Updates

Features:

- H.I.H.G Latest - P.6-7
- St Mary's Church, Angels - P.9
- Hambleton History - P.10-11
- Halloween Trail - P.12
- Village Hall festivities - P.13



As winter sets in, leaves fall on the freshly laid tarmac at the 'Ginnel'- P.2
Next planned PC Meetings: 10th December & 14th January

IN THIS EDITION

Newsletter Contact...	P.1
Parish Council News...	P.2-3
News from Chapel...	P.5
H.I.H.G...	P. 6-7
News from St Mary's Church...	P.9
HHRAA...	P.10-11
News from the Village Hall...	P.12-13
Contacts...	P.14

Newsletter Contact:

Submit your stories, articles or photos

Get in touch: Juvina Janik

NEW EMAIL: info@hambleton-pc.gov.uk

Telephone: 07935320677

For business adverts, please use the same contact as above.

The deadline for the next Newsletter, Edition 363 (FEB/MAR 21) is:
14TH JANUARY

www.hambleton-pc.gov.uk

PARISH COUNCIL NEWS



RESURFACING THE 'GINNEL'

The work at the 'Ginnel' has now been completed; the old path surface was uneven and broken up by the tree roots. For years the Parish Council have been in correspondence with the District Council and County Council about having the path repaired but neither authority wishes to take responsibility for the path. More recently, an elderly resident fell over on the path suffering injuries that were, luckily, relatively minor, but the Parish Council decided it must take action before a more serious accident happened there.

The Parish Council will continue its work to have the authorities take responsibility for the maintenance of this path.

The path is edged in timber due to the proximity of the large trees - this was recommended by the contractor and is a standard that Highways adopt when working in similar environments.

The Parish Council would like to apologise for any inconvenience caused whilst this work was being carried out and thank all Hambleton residents for their patience whilst this work was being carried out.



Photo credits: Caroline Perry Priestman (top row), Chris Janik (above)

REMEMBRANCE

This year the Parish Council were unable to mark Remembrance Day on the Green. The Chariman, Councillor Sim, laid a wreath on behalf of the Parish Council in advance of Armistice Day. Rather than gather together, the Parish Council encouraged residents to take part in the two minute silence from the safety of their own doorstep. At 11am, on the 11th Day, of the 11th Month, members of the community observed the two minute silence and Remembered.

"In 2020 we pay tribute to the men and women of the Second World War generation, and to those of today's, who have served and sacrificed to defend our nation. We remember the collaboration of the Commonwealth and Allied nations who stood shoulder to shoulder then to secure our freedom and the communities coming together today to protect us all."

The Royal British Legion



PARISH COUNCIL NEWS

These pages will give you an update on what the Parish Council have been dealing with and any issues that have been brought to our attention. Parish Council Meetings are held every second Thursday of the month, please check the Notice Board or website www.hambleton-pc.gov.uk for the most recent Minutes. An Agenda for the next meeting will be posted 3 days in advance of the meeting on the Notice Board.

CORONAVIRUS UPDATES

Cases of coronavirus continue to remain in the Selby District, the number of cases in Hambleton itself is also rising. The PC urges everyone to continue to adhere to restrictions and limit the potential for the spread of the virus. At the time of print, National Restrictions were in force throughout England but the guidance is set to potentially change for December. For the latest regulations please visit:

www.gov.uk/coronavirus

The matter must still be taken seriously, so please, where possible, avoid putting others at risk.

NEW VEHICLE ACTIVATED SIGNS

The Parish Council's new Vehicle Activated Signs will be getting installed mid December. The village will benefit from 2 light up signs, the display will flash alternately '30' and 'SLOW DOWN' on each. To maximise their impact, the locations of these signs must be temporary, so in conjunction with NYCC Highways, the PC has identified 4 locations which the signs will be switched between. The signs will also collect speed data.



HAMBLETON ISOLATION HELP GROUP

Hambleton Isolation Help Group are still operating and will continue to help anyone in the village who needs support during these awkward times. Please see P. 6-7 for their update. Your efforts are very much appreciated, thank you to the H.i.H.G. volunteers.

CCTV: RECREATION AREA

Following the vandalism to fencing panels around the Multi Use Games Area, the PC agreed CCTV would be an appropriate way to deter this sort of behaviour but also to identify the individuals responsible should it happen again. Many thanks to [24 Networks](http://24Networks), a Hambleton company, who efficiently installed the system at a reduced cost for the PC. The system is now up and running and the PC CCTV policy and associated data privacy documents are available on the PC website: www.hambleton-pc.gov.uk



GARTH DRIVE PARK

Some repairs were carried out to equipment and the safety surfaces recently and cleaning will still be continuing once a month. The PC is planning to install a replacement roundabout using money from the S106 fund (from planning developments within the village). Advanced notice will be given before work takes place.

In addition, the inspection report has advised that the large multi-play units are nearing the end of their serviceable lives. The PC will soon begin investigating possible replacements. Please contact the clerk with your ideas - obviously space and money are limiting factors here but we would like to get your input and involve the community in the plans.

We are still looking for a volunteer to be a key holder and open the park on weekends. All other days and locking up on an evening is covered, but if you think you could open on a Saturday, Sunday or both please contact the clerk.



HANDS



FACE



SPACE

HAMBLETON VILLAGE

Charlotte Garner

Independent Flamingo Paperie partner

**Beautiful Cards, Gift Wrap and Stationery Gifts
for all occasions**

Out and About Boxes

A selection box for people to shop from at home

Pop Up Shop

Under the porch at 89 Main Road

Also offering Pop Up Shop service at your home

(in accordance with government guidelines)

For more information or to order:

www.flamingopaperie.co.uk/web/charlottegarner

Facebook page Charlotte's Card Draw

Mobile: 07595439111



Clearview (Yorks) Ltd - Window & Exterior Cleaning

Regular window cleaning slots now available. All aspects of exterior cleaning undertaken.

- Gutter Clearing ●PVC Cleaning
- Conservatories ●Decking, Patios & Drives

Serving 300+ Hambleton residents. Give us a call and we will make your property sparkle.

Mob: 07976 466 549

Or email:

clearviewyorks@gmail.com

Check out our work on Social Media @clearviewyorks



Foundations
Concrete works
Drainage
All types of paving
Patio's
Fencing
Landscaping

Email - coregroundworks@hotmail.com

Telephone - 07525431554

Find us on Facebook
Core Groundworks York Ltd

NEWS FROM THE CHAPEL

We resumed worship at Chapel on 6th September and although things are different we have all felt very safe and were really grateful to be able to meet together and have some sort of service.

We had a very enjoyable Harvest Service, albeit very scaled down. We had a successful first Holy Communion service thanks to Rev. G Greenhough, we have visited Burn Chapel for their Harvest service and our own congregation member Christine did a wonderful service based on fireworks. However we are now back in lockdown and Chapel is closed for the whole of November. This is very disappointing but we fully understand the reasons why and will follow government rules.

At the moment we have no special plans for Christmas other than the usual Sunday morning service. If this changes we will put details on our Facebook page.

We do have a list of services for December, January and February and they are as follows:

6th December Rev. C Gillespie
13th December Service at Burn 10am
20th December Mrs k Lonsdale
27th December Local Arrangement
3rd January Local Arrangement
10th January Service at Burn 10am
17th January Rev. C Gillespie Covenant Service
24th January Mrs A Westaby
31st January Service at Sherburn 10.45am
7th February Local Arrangement
14th February Service at Burn 10am
21st February Rev. Ken Marshall
28th February Rev. C. Gillespie

We continue to think about you all and pray that very soon we can all meet together safely.

**Very best wishes,
Everyone at Chapel**

Let's learn...




Spanish

Fun and interactive group Spanish lessons for 4-11 year olds Tuesday evenings at Hambleton village hall.

Private 1-2-1 tuition for learners of any age from beginners to A-level in French and Spanish

Email: letslearn101@outlook.com

 www.facebook.com/letslearn2spanish

 07731 740019

Let's learn...



French



Virtual Administration, PA/EA Support, Project Management, Website design and general Secretarial Support Services.

Are you starting up your own business and need support in setting up your website and social media platforms?

Do you struggle finding time to do all your administration work?

Find you are inundated with emails, meetings and invoices or just need that extra support?

Then let LV Virtual Services take away the hassle, freeing up your valuable time for you to concentrate on your business.

Various packages available from ad-hoc to regular monthly work.

Laura Stanley

Website: www.lvirtualservices.co.uk

Tel: 07594620625

Email: LVServicesuk@gmail.com

HAMBLETON ISOLATION HELP GROUP**Test & Trace in North Yorkshire**

From 5 November, if you have tested positive for Covid-19 and the NHS Test and Trace service were unable to speak to you it will be North Yorkshire County Council's responsibility to contact you. They will contact you on an 01609 number. You do not need to contact them.

Part 1: for someone with symptoms of coronavirus

1. **isolate:** as soon as you experience coronavirus symptoms you must self-isolate for at least 10 days. Anyone else in your household must self-isolate for 14 days from when you started having symptoms
2. **test:** order a test immediately
3. **results:** if your test is positive, you must complete the remainder of your 10-day self-isolation. Anyone in your household must also complete self-isolation for 14 days from when you started having symptoms. If your test is negative, you and other household members no longer need to self-isolate
4. **share contacts:** if you test positive the NHS test and trace service will send you a text, email or call you with instructions of how to share details of people with whom you have had close, recent contact and places you have visited. It is important that you respond as soon as possible. You will be told to do this online via a secure website or you will be called by a contract tracer.

Part 2: if you are contacted by the NHS test and trace service because you have been in close contact with someone who has tested positive for coronavirus

1. **alert:** you will be alerted by the NHS test and trace service if you have been in close contact with someone who has tested positive for coronavirus. The alert will usually come by text, email or phone call. You should then log on to the NHS test and trace website, which is normally the easiest way for you and the service to communicate with each other – but, if not, a trained call handler will talk you through what you must do. Under-18s will get a phone call and a parent or guardian will be asked to give permission for the call to continue
2. **isolate:** you will be told to begin self-isolation for 14 days from your last contact with the person who has tested positive. It's really important to do this even if you don't feel unwell because, if you have been infected, you could become infectious to others at any point up to 14 days. Your household doesn't need to self-isolate with you, if you do not have symptoms, but they must take extra care to follow the guidance on social distancing and handwashing and avoid contact with you at home
3. **test if needed:** if you develop symptoms of coronavirus, other members of your household must self-isolate immediately at home for 14 days and you must book a test. If your test is positive, you must continue to stay at home for at least 7 days and you will be asked about your contacts since they must self-isolate. If your test is negative, you must still complete your 14-day self-isolation period because the virus may not be detectable yet - this is crucial to avoid unknowingly spreading the virus.

Before you attend you must book a test. Tests can be booked from 8pm the night before. If test sites are fully booked they will not appear on the government's website.

Testing sites operated and managed by the Department of Health and Social Care running between 11am and 3pm have been operating in various locations. Details of the locations can be found on the North Yorkshire County Council website.

HiHG is still here to help and will continue to be for as long as the pandemic lasts.

H.i.H.G.

HAMBLETON ISOLATION HELP GROUP

We are delighted to say that our registered volunteers are still helping people whether we are still in lockdown or if this restriction has eased.

If you are isolating, whatever your age, and need help with shopping, collection from the Selby Food Bank or collecting prescriptions just ring one of the numbers below and we will put you in contact with a volunteer. Your details will only be shared with the volunteer and you will be told which volunteer will be contacting you. If you have had a positive COVID 19 test please tell the person you phone so that the volunteer is aware before they contact you. No information about you or your request for help will be posted on Facebook or any public internet page.

H.i.H.G.

If you are feeling lonely and need someone to talk to, particularly as Christmas approaches, feel free to ring us. Some phone coordinators are still working so you may need to leave a message but we will get back to you.

We are asked to think **Hands, Face, Space...**

Celia: 01757 228649

Emma: 07947 462 121

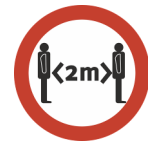
Wash hands regularly for at least 20 seconds

Jessica: 07769 266 618

Katie: 07759 520 227

Cover your face in enclosed spaces

Stay 2 metres apart where possible, or 1 metre with extra precautions in place.



You can **exercise** with those in your household, those in your support bubble or one other person in a public outside space.

For people with access to the internet here are some sources of **information and advice**:

- The NHS web page <https://www.nhs.uk/conditions/coronavirus-covid-19/> contains information about various aspects of the virus.
- <https://www.northyorks.gov.uk/coronavirus-advice-and-information> includes information about the changes to services
- <https://www.gov.uk/coronavirus>
- [Hambleton Isolation Help Group](#) Facebook page is still active and includes some of the items posted by [Selby District AVS](#) on their page, the information covers a variety of subjects.
- www.cyps.northyorks.gov.uk

Shopping

- Hambleton Stores: 01757 229000. Home delivery is available if you ring with your list and pay over the phone the items will be put together and delivered to you at home.
- Morrisons: they are reinstating the queuing system outside the shop.
- Sainsburys: continue to use a queuing system and monitor and manage the number of people in the shop
- Tesco: the priority hours for elderly and vulnerable posted on their website this week are 0900-1000 on Wednesday and Sunday at Portholme Road Store.
- Bert's Barrow: operating a click & collect and reinstating drive through shopping
- Brayton Farm Shop: open Tuesday to Saturday inclusive.

We are grateful to Hambleton Parish Council who continue to have information about COVID-19 and HiHG their Website.

Please stay safe as we start to go out and about.



Networks & Security



**CCTV Systems
Intruder Alarms
Network Cabling
Access Control
Security Lighting**

**Monitor your home
from your phone!**



**Located in Hambleton | Domestic & Commercial
www.24networks.org | [Instagram.com/24networks](https://www.instagram.com/24networks)**

Contact us on 0113 2093 247
or email us on contact@24networks.org

NEWS FROM ST. MARY'S CHURCH

"Our world may face great uncertainty, but the amazing coming of the Christchild at that very first Christmas reminds us that God's love for us is certain. Celebrate with us in spirit and discover that, though the world around us is at odds, there is still peace to be found in the baby born to be King. O, come let us adore him, Christ, the Lord."

It is very difficult to predict what will happen after the full lockdown has ended on the 2nd December, but it is unlikely that anything will return to normal very soon. Our usual joyful Christmas celebrations in Church and in the village will at best be severely curtailed.



So, in God's due time we hope to welcome you once again to St Mary's. However, thanks to the internet, many of you will have the opportunity to join us online for services on Sundays and during the Christmas period.

We have no fixed date for a Carol Service in Hambleton, though we had tentatively planned a Midnight Holy Communion on Christmas Eve. Even if we had a Carol Service it is unlikely that there could be any singing! Nevertheless, we have started to put together a Christmas music/poems/Readings event, that could happen 'live' in church or, most probably, just online. So, apart in body, but together in spirit, we can celebrate in 2020 the miraculous birth of God's son, Jesus Christ, and welcome him into our hearts this Christmas.

The following words have been a constant help to generations of people, and I pray that they will give us all strength and peace as we face this crisis together:

¹God is our refuge and strength, an ever-present help in trouble. ²Therefore we will not fear, though the earth give way and the mountains fall into the heart of the sea.

Psalm 46:1,2

ANGEL IN YOUR WINDOW

Up to date information can usually be found on Facebook:

www.facebook.com/stmaryshambleton

and on our Website:

www.stmaryshambleton.org.uk

Vicar: Revd Anna Burr 270325

Churchwarden: David Ingall 228380

Put an angel in your window to start Advent, bringing Hope, Peace, Joy and Love into our community.

For more information see:

www.stmaryshambleton.org.uk

Janys Cliff (Church Reader & Lay Dean)

HAMBLETON HISTORY, RESEARCH AND ARCHIVES ASSOCIATION



Hambleton History Research & Archive Association

Employment in Hambleton**Glossary:**

Villan - An unfree peasant who owed his lord labour services (two or three days per week) but who also farmed land for himself. Villans were the wealthiest and most numerous of unfree peasants. Also called villains or villeins.

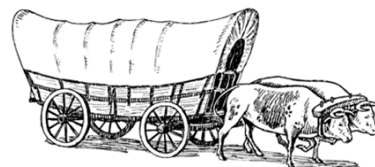
Bordar - Unfree peasant with less land than villans.

Sokemen - Freeman who nevertheless had to attend their lord's court.

www.nationalarchives.gov.uk/domesday/glossary/

The majority of villagers have to commute for work, although these days it may be working from home, but for generations the main employment in the village was farming or associated activities.

The village was a farming community in the Domesday Book completed in 1086, a translation of which indicates that there was 1 plough, this is thought to have meant that there was a team of 8 oxen able to pull a plough in the village, 6 'villans', 1 'border' and 2 'sokemen' all of whom worked the land and were bound to the Lord of the village in different ways. There is also mention of woodland.



By the time of the 1841 Census there were 102 properties in the village and 607 people but only 219 listed employment, 148 of whom were directly involved in farming and many others in jobs which supported the farms or the community. There were 3 millers, 8 blacksmiths, 15 shoemakers, 11 tailors, 3 butchers, 11 joiners, 5 in property repair, 6 shop keepers, 2 publicans, 2 teachers, 1 solicitor and 3 living on independent means. The youngest worker

listed was 11 and the oldest 75.

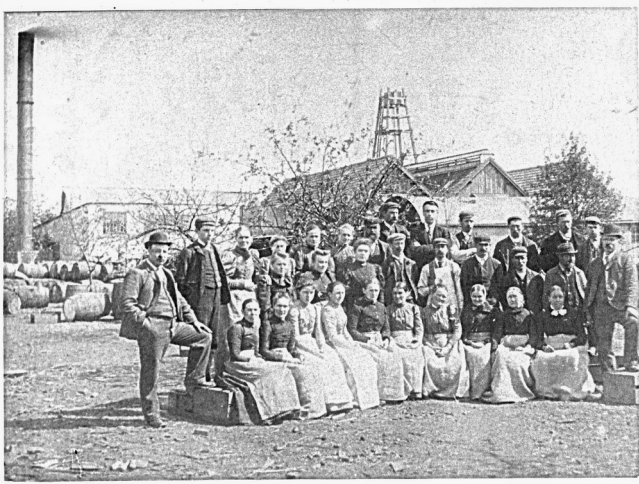
One villager remembers that in the late 1920's there was no real need to leave the village as you could buy everything you need in the village, however, he preferred to go to Leeds to buy his school clothes as it made a great outing.



- **DOG WALKING**
- **DOG BOARDING**
- **DOGGY DAYCARE**
- **PET TAXI**
- **HOME VISITS**
- **PUPPY VISIT & PLAY**

BASED IN HAMBLETON**FULLY LICENSED, INSURED & DBS CHECKED****TEL: 07549 704 717****venturapetservices.co.uk****FOLLOW US ON FACEBOOK**

HAMBLETON HISTORY, RESEARCH AND ARCHIVES ASSOCIATION



Staff of Anson Brothers



Possibly taken on Garth House Farm

In the 1950s there were 17 farms and 2 small holding, over the years many of the farms have combined leaving the majority of the land worked by four farms in 2020.

In the early 1900s Anson Brothers Pickle Factory employed a number of people, both men and women. The village could always tell what was being prepared in the factory as the smell pervaded the village. The range of goods offered for sale was extensive including jams, pickles and spices.

The Palframan family were involved in milling corn and Chilvers & Palframan were both corn and agricultural merchants. We are still researching this company but so far information has been scares.



Mrs Sayner outside her shop around the early 1900s



We look forward to the time when we can hold our next open meeting in the village hall. There is more information on the HHRAA website, and we continue to add information although this is taking longer as some of the photographs we have require further research before they are added. Wishing you a Merry Christmas and much better 2021. **HHRAA.**

HAMBLETON VILLAGE HALL



It was great to have so many people get involved with the Halloween Trail! So many fantastic displays and some worthy prize winners. **THANK YOU ALL** for creating such lovely community spirit! Both The Owl and The Red Lion made a special effort to welcome Trick or Treaters on Saturday and we thank them for getting involved and doing some judging for us too. Special thanks to **Adam Durkin** who designed the fantastic Map for us and also **Fiona Brown** who created and distributed all the hidden letters for the Anagram!

For anyone who didn't get all the letters, here they are, have another go:

WOTEEFYNE

Clue: Popular witches spell ingredient
(answer at the bottom of the page)

Well done to two residents, Sylvia and Mason, who managed to correctly work out the answer!!

Photos, clockwise from top Left:

WINNER - Best display!
Runner Up - Best Display
Runner Up - Best Display

Brooke - WINNER
Best Dressed Girl as chosen by The Red Lion
Zach - WINNER
Best Dressed Boy as chosen by The Owl Hotel



ANAGRAM ANSWER: EYE OF NEWT

HAMBLETON VILLAGE HALL

So, at this point, we are not sure whether the hall will have been allowed to resume business for December or not!!

CAROLS ON THE GREEN IS CANCELLED - we could not safely enforce any sort of social distancing rules at the event, BUT our current plans do involve some **Community Cheer!!** The Village Hall Committee will be creating the usual

Winter Wonderland

In the small hall which you will be able to see through the window during December.

HAMBLETON ADVENT WINDOWS

Can you find the 24 window displays around Hambleton? We have 24 lovely Hambleton residents who have each volunteered to create a festive scene in their window for the whole of December. Each will be given a number from 1 to 24, your challenge is to see if you can find the whole advent calendar, but you do have the whole of December to do it! Good Luck!!

CHRISTMAS TREE TRAIL

Decorate any tree in your garden. As the Halloween trail was such a success we would like to invite you all to decorate a tree for people to spot during the weekend of 19th-20th December. There will NOT be a map and there is no entry fee to join in.

CHRISTMAS RAFFLE

There will be FOUR Christmas Hamper Raffle prizes; one large, and 3 smaller ones; there will be lots of festive treats in each.

This will be an online raffle, 50p per entry, payment details will be on Facebook or email hambletonvh@outlook.com

Each entry will be allocated a number at random and the winners will be **drawn live on Facebook** on Sunday 20th December using random.org

MULLED WINE & CHRISTMAS CHEER

If Government restrictions and funding allow, there may be a couple of Santa's Little Helpers giving out free Mulled Wine and Hot Chocolate from the Village Hall forecourt on the 19-20th weekend... time and details will be on Facebook - ***should this go ahead, you will be expected to adhere strictly to government guidance and socially distance! Keep everyone safe!***

Season's Greetings to One and All



When the Hall is re-opened there are Covid 19 Control Measures in place that you will be expected to follow.

YOU CAN PROVISIONALLY BOOK THE HALL FOR EVENTS AT:

hallbookingonline.com/hambleton/

With the guidelines changing regularly, we understand if your event has to be cancelled because of this at last minute, there will be no charge. Feel free to drop us an email to discuss your requirements at: HambletonVH@outlook.com



Like Hambleton Village Hall on Facebook to see all the latest updates and event news



USEFUL CONTACTS & EVENTS

USEFUL CONTACTS	
Organisation	Number/Email address
Age UK Shopping Service	01757 704115
Association Voluntary Services (AVS)	01757 291111 enquiries@selbydistrictavs.org.uk
Citizens Advice, Selby	Advice line: 03444 111 444 Admin line: 01757 701320
Crimestoppers	0800 555 111
District Councillor: Chris Pearson	01757 704202 cllr.chris.pearson@northyorks.gov.uk
Dog Warden: Report a stray dog/Dog Fouling	01757 705101
Hambleton C of E Primary School	01757 228391 admin@hambleton.n-yorks.sch.uk
Hambleton Parish Council Chair: Cllr Richard Sim Clerk: Mrs Juvina Janik	www.hambleton-pc.gov.uk rich.sim@outlook.com 07935320677 info@hambleton-pc.gov.uk
Hambleton Village Hall	HambletonVH@outlook.com Hallbookingonline.com/hambleton
Independent Domestic Abuse Service	01757 708956
NHS Direct	111
NHS Find urgent Mental Health support	https://www.nhs.uk/service-search/mental-health/find-an-urgent-mental-health-helpline
North Yorkshire Horizon (alcohol misuse service)	01723 330730
Police – non emergency i.e social distancing breach	101
Samaritans	116 123 (Free)
Selby Community Transport	Car: 01757 708036 Minibus: 01757 241041
Selby District Council	01757 705101 info@selby.gov.uk
Selby War Memorial Hospital	01904 724300
Reverend Anna Burr	01757 270325

CALENDAR OF UPCOMING EVENTS	
DECEMBER 2020 EVENTS	
ST. MARY'S CHURCH - AN ANGEL IN YOUR WINDOW	AROUND THE VILLAGE THROUGHOUT ADVENT - SEE P.9
VILLAGE ADVENT WINDOWS	AROUND THE VILLAGE THROUGHOUT DECEMBER SEE P. 13
CHRISTMAS TREE TRAIL	AROUND THE VILLAGE 19 & 20TH SEE P. 13
VILLAGE HALL'S MULLED WINE AND FESTIVE CHEER	TBC - VILLAGE HALL 19TH AND 20TH SEE P. 13

REPORT AN ISSUE:

MANY ISSUES CAN NOW BE REPORTED TO THE APPROPRIATE AUTHORITIES ONLINE BY ANYBODY:

DOG FOULING:

<https://www.selby.gov.uk/dog-fouling>

STREET LIGHT FAULT:

<https://www.northyorks.gov.uk/report-street-light-problem>

POTHoles & MUD ON ROAD:

<https://www.northyorks.gov.uk/potholes-and-road-condition-issues>

FLY TIPPING:

<http://www.selby.gov.uk/report-fly-tipping-or-fly-posting>

VIEW PLANNING APPLICATIONS:

www.selby.gov.uk/view-applications-public-access

INTERACTIVE ROADWORKS MAP:

<https://www.northyorks.gov.uk/roadworks-map>

BREACH OF SOCIAL DISTANCING LAWS:

PLEASE CALL 101

VILLAGE MAINTENANCE ISSUES (including dog waste bag refills) PLEASE EMAIL:

Info@hambleton-pc.gov.uk